

Coordinating editor

Eberhard Fuchs

German Primate Center, Göttingen

Topical editors

Rebecca R. Ackermann | Catherine Crockford | Sarah Elton | Heinz Feldmann | Julia Fischer | Russell Hill | Peter Horn | Nina Jablonski | Weizhi Ji | Frank Kirchhoff | Amanda Korstjens | Hans-Jürg Kuhn | Fabian Leendertz | Anne Lewis | Keith G. Mansfield | Ulrich Martin | Julia Ostner | Ute Radespiel | Jonah Ratsimbazafy | Angela Roberts | Erika Sasaki | Stefan Schlatt | Bert 't Hart | Stefan Treue | Jenny Tung | Linda Vigilant | Augusto Vitale | Gerhard Weinbauer | Sarah Wolfensohn | Ulrich Zeller | Elke Zimmermann | Dietmar Zinner

eISSN 2363-4715 | ISSN 2363-4707

www.primate-biology.net



@PrimateBiology

- **article processing charges waived upon request**
- awarded the DOAJ Seal
- indexed in DOAJ, EBSCO, J-Gate, World Public Library, and others
- archived in Portico & CLOCKSS



Copernicus Publications

The Innovative Open Access Publisher

Copernicus Publications
Bahnhofsallee 1e
37081 Göttingen
Germany

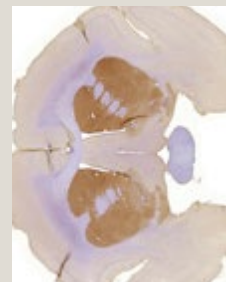
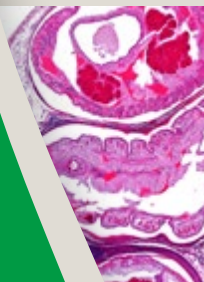
Phone: +49 551 9 00 33 90
Fax: +49 551 90 03 39 70

publications@copernicus.org
<http://publications.copernicus.org>

PB image credits:

Armillifer agkistrodontis in the liver of a cynomolgus monkey (*Macaca fascicularis*), photo: Metz-Rensing / Deutsches Primatenzentrum GmbH Crested macaque (*Macaca nigra*), photo: Giyarto / Deutsches Primatenzentrum GmbH Immuno staining for dopamine transporter in the brain of a common marmoset monkey (*Callithrix jacchus*), photo: Garea-Rodriguez / Deutsches Primatenzentrum GmbH

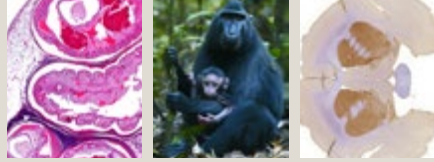
Primate Biology



An international open-access
journal on primate research

www.primate-biology.net





Aims and scope



Primate Biology (PB) is an international peer-reviewed open-access journal that publishes advanced research in all scientific areas involving non-human primates.

The journal publishes research articles, reviews, brief communications, technical notes, registered reports, opinion papers, and book reviews. As an additional option, articles published previously in PB may be commented on.



Papers can address different topics and approaches, including theory, modelling, experiments, and methods. PB covers the following subject areas, which are used to categorize papers:

- anatomy and embryology;
- animal welfare and husbandry;
- behaviour;
- cognition and communication;
- conservation;
- ecology and biogeography;
- evolution, phylogeny, and palaeontology;
- genetics;
- immunology;
- infection biology;
- neurosciences;
- pathology;
- physiology;
- reproductive biology;
- stem cell biology.

